

BE MINE

Valentines DATE NIGHT

Two heart-shaped cookies, one pink and one red, are in the top left corner of the card. The card has a white background with a red border and a pattern of red hearts and black outlines of hearts and envelopes.

WHAT ARE YOU MOST EXCITED ABOUT TOMORROW?

A brown Eiffel Tower is in the bottom right corner of the card. The card has a white background with a red border and a pattern of black outlines of hearts and envelopes.

WHAT WERE THE 3 HAPPIEST DAYS OF YOUR LIFE?

A large pink bow is in the top right corner of the card. The card has a white background with a red border and a pattern of red hearts and black outlines of hearts and envelopes.

DESCRIBE YOUR DREAM DATE

A white mug with the words "love you" in red cursive is in the bottom left corner of the card. The card has a white background with a red border and a pattern of black outlines of hearts and envelopes.

WHAT MAKES YOU FEEL THE MOST LOVED?

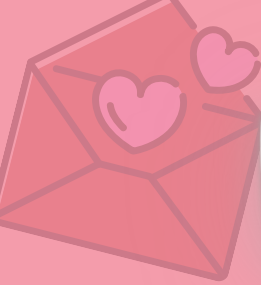
A white rose is in the top right corner of the card. The card has a white background with a red border and a pattern of red hearts and black outlines of hearts and envelopes.

IF WE COULD DO ANYTHING RIGHT THIS MINUTE WHAT WOULD IT BE?

A red matchbox with the words "WE'RE A PERFECT MATCH" and three lit matches is in the bottom left corner of the card. The card has a white background with a red border and a pattern of black outlines of hearts and envelopes.


WHERE WOULD BE THE MOST ROMANTIC PLACE FOR US TO TRAVEL?

CONVERSATION CARDS



Valentines DATE NIGHT

BE MINE



DO YOU BELIEVE IN SOULMATES?

WHAT DO YOU REMEMBER ABOUT THE FIRST TIME WE MET?



NAME 3 THINGS YOU WOULD DO IF YOU WON THE LOTTERY.




WHAT IS YOUR FAVORITE CHILDHOOD MEMORY?



NAME 3 THINGS ON YOUR BUCKET LIST



WHO WOULD PLAY YOU IN A MOVIE ABOUT YOUR LIFE?



CONVERSATION CARDS